



AMERICAN  
SWEDISH  
INSTITUTE



# Report to the Community

Fiscal Year 2022  
October 1, 2021–September 30, 2022





## Table of Contents

Mission, Vision, Values	3
A Message from Bruce Karstadt, ASI President / CEO	4
A Message from Maggi Adamek, ASI Board Chair	5
Stories, Stonework & Stewardship	6-9
Connecting Our Stories: Exhibitions	10-15
Collections	16-17
Growing Community	18-19
Community Fund	20-21
Programs & Events	22-25
Clubs & Affiliates	26
FIKA Café	27
Annual Giving	28-33
Stories, Stonework & Stewardship Donors and Life Members	34-35
Heritage Society Members	36
Volunteer Recognition	37
ASI at a Glance (Statistics)	38
Sources of Funds and Expenditures for Core Mission Support and Capital Projects FY22	39

## Board of Trustees

### Officers

Dr. Maggi Adamek (Chair)  
David Sorensen (Vice-Chair)  
Elizabeth Olson (Treasurer)  
Lynnea Atlas-Ingebretson (Secretary)

### Trustees

Aimee Richcreek Baxter  
Carline Bengtsson  
Michael Bjornberg  
Brenda Butler  
Tikki Brown  
Brad Engdahl

Barbara Linell Glaser, Ed.D  
Dr. Mary Dee Hicks  
Axel Peter Hilger  
Lisa Källebo  
Dr. John Litell  
Marco Molinari  
Mohamud Mumin  
Andreas Örnberg  
Andrea Oseland  
Lenor Scheffler  
Linda Wallenberg  
William Weiler

*Trustees as of September 30, 2022*

## Management & Lead Staff

**Bruce Karstadt**, President & CEO  
**Peggy Korsmo-Kennon**, Chief  
Operating Officer  
**Steven Engelkes**, Director of Finance  
**Christiana Stolpestad**, Director of  
Engagement  
**Ingrid Nyholm-Lange**, Director of  
Experience  
**Nate Adelmann**, Facilities Manager  
**Dexter Carlson**, Development  
Manager

**Shelby Matula**, Visitor Services  
Manager  
**April Neske**, Human Resources  
Manager  
**Rick Sellen**, Retail Manager  
**Erin Stromgren**, Exhibitions Manager  
**Inga Theissen**, Collections Manager  
**Britta Walstrom**, Programs Manager  
**Eric Wilson**, Engagement Strategy  
Manager

*Staff as of September 30, 2022*



# Mission

The American Swedish Institute is a gathering place for all people to explore diverse experiences of migration, identity, belonging and the environment through arts and culture, informed by enduring links to Sweden.

---

# Vision

The American Swedish Institute will be a leading museum and cultural center that invites all people to connect their pasts to their shared future, to understand their heritage in relation to others and to discover their role as neighbors and global citizens. Vibrant, ongoing ties to Sweden will illuminate and inspire all these endeavors.

---

# Values

## Stewardship

We embrace the legacy of stewardship given to us in the Turnblad Mansion, Nelson Cultural Center, and our collections.

## Hospitality

We invest in our role as a welcoming and joyful place for all people and foster authentic relationships with communities local, national, and international.

## Learning

We offer transformational, varied learning experiences by providing platforms for reflection, participation, collaboration, and the exchange of ideas.

## Difference

We honor variation and interconnections among cultures and histories, engaging with the complexities, creativity, and consequences of their interactions.

## Innovation

We create innovative programs, collaborations, and experiences that embrace beautiful design and encourage new ways of thinking.

## Sustainability

We embody our social and environmental responsibilities through programs, facilities, and operations that sustain the well-being of our organization, communities, and the natural world.

---

# Acknowledgement of the Dakota People

Welcome to the American Swedish Institute. We wish to acknowledge the Dakota peoples, on whose land we meet, and to thank them for their ongoing care of the land, and acknowledge their connections to this community and the richness of their culture. In this spirit and in recognition of the growing diversity of our neighborhood, we thank you for coming here and for being a part of the American Swedish Institute's mission to serve as a gathering place for ALL people.



# A Message from Bruce Karstadt

## ASI President & CEO

This column represents my last formal report as President and CEO of the American Swedish Institute. My first report was written in long-hand on a legal pad and then handed to my colleague Sandra, who typed it with blistering speed on her IBM Selectric typewriter (equipped with a Swedish font ball). I'd only been at ASI for 3 months by this time. With very little information about what had actually occurred at ASI, I dove into a brief summary of the past year's highlights. I think it was reasonably accurate.

Over time, technology changed, our campus has expanded, and ASI has grown. The following report gives evidence of that growth by offering a reminder of a year of increasing attendance and a calendar filled with great moments in the museum, our classrooms, and our public spaces, as well as our efforts to fulfill our responsibility as stewards of our historic home, the Turnblad Mansion and Carriage House.

This year, given the momentous nature of this moment, I thought it might be best to take a different track and simply to speak from the heart about how I feel about ASI and my hopes for its future.

I was known only to a few people in the Twin Cities when I started my work in 1990, which was a rather unsettling feeling given that I came from a small town of 3,000 citizens where everyone knew everyone. Over time, I began to understand that there was a true community here, filled with kind people who generously offered friendship, support, and guidance. I remember fondly my first year when then-Board chair Carl Ahlgren would come to my office weekly to pick me up and drive me around Minneapolis simply to meet people. Those were memorable trips resulting in lasting friendships and support.



As this past year unfolded, I encountered many people who expressed their gratitude for all that ASI has become: a place to gather over fika, a place to learn, a place to reinforce their appreciation of heritage, and a place to meet new friends whose migration stories are both similar and dissimilar to their own. I was so glad to hear the passion in their voices as they described their joy in a particular exhibit, class, public event, or simply the joy of one of FIKA's exquisite meals. These conversations have given me even more assurance of ASI's resiliency.

Thank you for giving me the privilege of serving ASI all these years. What has been made possible and what will be made possible in the years ahead depends largely upon you. The generous contributions of our members, donors and volunteers — and the inspired leadership of a deeply invested Board and creative staff — make all things possible. Please continue to show a generous spirit to ASI, for your support enables us to work with assurance that we can continue to make an abiding impact upon our community. Thank you for your friendship. Thank you for your support. *Tack så hemskt mycket.*



# A Message from Maggi Adamek

## ASI Board Chair

I am especially thrilled for this annual report and all the wonderful accomplishments achieved at ASI during Fiscal Year 2022. Looking back at an incredible year for our community, there is so much to share that would certainly fill this report many times over. As I consider all that happened in the span of 12 months, two words come to mind: transition and transformation.

With the return of in-person activities and gatherings, our community experienced a transition back to engaging with ASI in ways we all missed during the pandemic. Galleries and exhibition spaces filled once again with visitors; countless classes hosted students eager to learn hand and food crafts; and holiday and summer traditions resumed with palpable excitement. Not all transitions feel so celebratory and triumphant—it is hard to imagine these feats as anything but!

In Spring 2022, we announced that our beloved, long-time leader, Bruce Karstadt, would retire after an exemplary 30-year tenure. We thus initiated a nationwide search for a worthy successor.

As ASI's campus bustled with this activity and planning for the next generation of leadership, another incredible transformation was underway. Work began to restore and repair the Turnblad Mansion, an historic architectural jewel of the Twin Cities. Trustees, staff, volunteers, members, and supporters alike are delighted that this major undertaking will ensure that ASI remains an indelible cultural institution.

The only certainty is change, goes the old adage. Through this exciting period of transition and transformation, ASI's amazing community of members, donors, and visitors have joined to ensure this significant phase in ASI's history is memorable,



meaningful, and positive. I couldn't be more delighted about what the future holds, striking that unique balance of heritage, innovation, radical hospitality, and enduring ties to Sweden that makes ASI such a cherished place for so many.

*Tack så mycket!*





# Stories, Stonework & Stewardship

## Watch the Interview

Scott Halverson and Margaret Moore of Northern Stone Carving discuss their process of restoring stonework for the Mansion on ASI's YouTube channel.

## Phase 1 of ASI's Capital Project Nears Completion Thanks to Community Support

More than a century after the historic Turnblad Mansion was constructed, the American Swedish Institute has reached a major conservation milestone to ensure its preservation for future generations. Thanks to generous community support, ASI will successfully complete the first phase of its Stories, Stonework & Stewardship capital campaign summer of 2023. Much of the work done to date has focused on the Mansion's exterior and two interior spaces. From landscaping to structural repairs, visitors to ASI over the last year have witnessed the careful efforts to preserve, restore, repair, and conserve the Mansion and its beloved campus.

Beginning with the exterior of the Turnblad Mansion in spring of 2022, ASI and construction partner JE Dunn were faced with the challenging task

of restoring the iconic architecture and unique features of the historic home. After nearly a year of work, the limestone veranda and façade have been cleaned and restored, complete with new scuppers and gargoyles, expertly carved by Margaret Moore and Scott Halverson of Northern Stone Carving in Northeast Minneapolis to match those created a century prior.

The scaffolding that once wrapped the south side of the Mansion, has been disassembled to reveal the repaired and stabilized porte cochère, solarium, and southeast turret—all hallmarks of the Mansion's iconic architecture and important historical features chosen by Swan Turnblad himself. Beginning with the exterior of the Turnblad Mansion in the spring of 2022, ASI's construction partner Fresh Air Finishers



repaired, and in some cases replaced, more than 160 windows throughout the Mansion, with more windows to be attended to in the second phase of the campaign.

To care for the eight tons of fence sections and gates that enclose the Mansion's campus, ASI partnered with expert metal fabricators at Bauer Metal in Saint Paul. Each section underwent a meticulous process of sandblasting, powder coat application, and finished with new black paint. During the restoration process, the metal fabricators noticed certain fence sections appeared to have been forged with the letters S and C as decoration, perhaps serving as an homage to ASI founders, Swan and Christina Turnblad. After several weeks at Bauer Metal, the fence was reinstalled at its home on Park Avenue.

From months of construction activity, machinery, and materials taking residence on the front lawn of the Mansion, the once flourishing gardens needed replanting and reimagining as well. Thanks to Bachman's Garden Center, ASI is now home to native flowers, shrubs, and trees that will bloom in the spring and summer of 2023 and provide wonderful color and character to the Mansion's lawns for years to come.

Along with the exterior restoration, two interior spaces were transformed to better fit the needs of ASI's audience and stakeholders. Situated in the lower level of the Mansion, Paulson Hall has been the home of ASI's signature Nordic Table programs and has welcomed ASI members and clubs for countless gatherings, rehearsals, and classes for decades. Updates to the space include an expanded and improved kitchen footprint equipped with new appliances, as well as new technology and A/V equipment. The renovation of the space included the care and restoration of the Paulson Hall mural, a historic piece of folk art that became a signature feature of the room when it opened in the 1980s. The mural will be reinstalled in summer 2023, protected and preserved behind high-quality glass paneling.

The final project of Phase 1 will see the completed renovation of the Carriage House by the time this publication is printed, situated on the western

edge of ASI's campus. Outfitted with an elevator and brand-new Nordic-inspired furnishings, the transformation of ASI's office space will offer staff and volunteers an accessible working environment with several collaborative and creative workspaces. Despite many changes to the Carriage House, HGA Architects and ASI were careful to preserve the hallmarks of the original construction, including the turntable for Swan Turnblad's car, as well as the beautiful arched windows throughout the three-story building.

To date, ASI's ongoing Stories, Stonework & Stewardship campaign has raised more than \$13 million from generous members, donors, and friends to ASI. Thanks to this support, ASI anticipates reaching the conclusion of Phase 1 this summer and looks forward to the next phase of restoration efforts to preserve one of the Twin Cities' most iconic cultural centers.

---

### **Ways to Give and Support the Stories, Stonework & Stewardship Campaign:**

Stewardship of the Historic Turnblad Mansion and the preservation of a campus that welcomes all visitors is possible thanks to the generous gifts from ASI's donors and members.

To support this ongoing work and help ASI complete Phase 1, visit [www.asimn.org/support/mansionproject](http://www.asimn.org/support/mansionproject) or call Christiana Stolpestad, Director of Engagement at (612) 870-3354.

**"ASI is my touchstone place. As I raised a family, I frequently visited with my family and we shared the magic together. It is imperative that places like ASI are cared for so that many other generations may also enjoy these moments of wonder and awe."**

**—Michael Bjornberg, Preservation Architect and ASI Trustee**



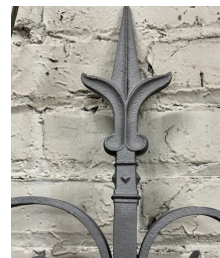
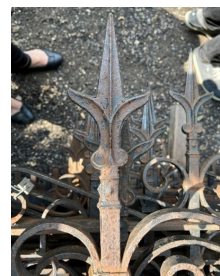


## Mansion Veranda and Exterior Restoration

Repairing and restoring the veranda and mansion façade began in the Spring of 2022. JE Dunn replaced damaged sections of the Veranda to match the original materials (top).

New limestone details were expertly carved to match the historic designs (bottom right).

Old scuppers sit next to newly carved replacements (bottom center). Detail of recreated scuppers from Northern Stone Carving (bottom left).



## Historic Fence Repair

The iconic cast iron fence that wraps ASI's campus was cared for and restored. On the right, the upper photograph shows the fence before it was transported to Bauer Metal.

The bottom photo shows the cleaned and re-coated metal.





Before

## Carriage House Renovations

Originally used as a garage for the Turnblad's automobile and as household staff quarters, the Carriage House is home to the ASI staff offices and volunteer lounge. The complete renovation of the Carriage House included the installation of an elevator, new and improved work and meeting spaces, and the restoration of historic features of the building.

During the early days of construction, workers uncovered the turntable once used to rotate the Turnblad's car (top photo).

In order to protect this incredible feature, protective flooring was installed and a brass inlay now outlines where the turntable lays beneath (bottom photo).



After



## Paulson Hall Renovation

Originally built in the 1980's Paulson Hall is home to ASI's Nordic Table programs, community events, classes, and more.

During Phase 1 of the campaign, Paulson Hall received an expanded kitchen footprint outfitted with new equipment, improved technology, and new A/V equipment.





# Connecting Our Stories: FY22 Exhibitions

Throughout FY22, six different exhibitions explored themes of connection, identity, and belonging. Following a temporary closure of the museum galleries and the Turnblad Mansion, ASI reopened its doors in mid-February for visitors to see *Paper Dialogues: The Dragon and Our Stories*. What began as a modest collaboration between two papercutting artists, Karen Bit Vejle, “Bit” (Denmark) and Professor Xiaoguang Qiao (China), evolved into an international traveling exhibition and conversation. Joined by artists Layla May Arthur and Emma Reid from the British isle of Jersey, the *Paper Dialogues* artists explored the intersections between their cultures and traditions through intricate papercutting works, an art form that traces its roots back more than 1,500 years.

Bit and Qiao had their first silent dialogue in China, where scissors were their means of easy

communication. They decided that the mystical creature, the dragon, which has a strong representation in each of their cultures, would be the symbol that linked their works and their lands. From this collaboration, the Chinese Dragon and the Norse Dragon began their dialogue. Bit hatched *Seven Dragon Eggs*, which tell the story of Scandinavians and their cultural heritage and soul, and Qiao gave birth to *Fish and Dragon Change*, a piece that seeks to depict the major changes he sees happening in China today.

**“This art highlights the importance of understanding how shared traditions of different cultures help us find common ground despite language barriers.”**

**–Bruce Karstadt**





**Professor Xiaoguang Qiao (left)  
and Karen Bit Vejle (right)**

"The collaboration has been a learning process. We haven't been able to communicate directly with one another without a translator, but we have decoded each other and created a different kind of dialogue. I feel that I have seen his heart—that we look into each other's soul." –Karen Bit Vejle



**Julien and Gianna, The Morning Dip**  
by Peggy Anderson





Photographer Peggy Anderson on the third floor galleries of the Turnblad Mansion.



**"By picturing them, I am gaining insight into a community that, slowly but surely, I have entered, and into my complex identity as a Swede." –Peggy Anderson**

In July, dragons were replaced with bathrobes. Peggy Anderson's US premiere of *The Morning Dip* made for the perfect mid-summer exhibition. *The Morning Dip* was an ongoing portrait series that captures the tradition of Torekov residents (a small fishing village on the west coast of Sweden) taking a daily swim in the sea. The exhibit explored this practice and the meaning we can find in it. For most, our daily rituals do not include taking a swim in the sea; however, we all practice some rituals that keep us connected to our community, either locally or globally.

For Anderson, the Swedish morning ritual of a bath in the sea is more than just a cultural quirk. The exhibit reflects the country and community that she was raised in and returns to each summer. To Torekov residents, the morning swim is "better than espresso," says Anderson, who enjoys photographing people for the challenge and for the

opportunity to connect. In photographing Swedes for this series with a long format camera, Anderson feels her focus has changed from an end goal to the process.

ASI was fortunate to host Anderson for a week, an aspect of exhibit installation that was not possible for several years due to the pandemic. Hosting visiting artists provides invaluable time not only for ASI's exhibitions team, but also for all ASI staff and patrons who can spend time with and be inspired by the artist and their work. This exhibit touched many aspects of campus and its summer programming. ASI hosted its own morning dip club at Lake Harriet throughout the month of July, volunteer Ted Johnson dutifully wore his robe to each of his shifts throughout the exhibit's stay, and the return of ASI's iconic party, Cocktails at the Castle, featured a bathrobe dress-code.



## FY22 Exhibitions



### ***From Our House to Yours***

**November 13, 2021–January 9, 2022**

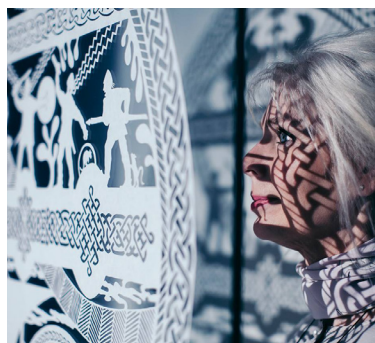
Classic met contemporary in ASI's 71st annual holiday exhibition within the Turnblad Mansion as guest curators representing Sweden, Norway, Denmark, Iceland, Finland, the Sami Culture Center, and the Hmong Museum, came together at one, over-sized, round table in the Ballroom to share stories and traditions through festive place settings and décor from the home. Visitors were able to access the ASI courtyard decorated with festive red holiday market stalls and activated with *kubb*, vendors, warm fires, and live music on select days. The photography series *Northern Nature* by Erika Skogg was also featured, a series that highlights Nordic-American culture in homes and communities across the Upper Midwest.



### ***Thermal: Meditations on Climate Change***

**February 19, 2022–June 19, 2022**

Set in the ornate ballroom of the Turnblad Mansion, *Thermal* was a multidisciplinary installation of form, movement, and sound centered on Earth's changing environment. A sprawling sculptural paper artwork by artist Kim Heidkamp spilled from the ballroom stage across the floor like a creature of Norse mythology asleep in the landscape. Composer Joshua Clausen and choreographer Mathew Janczewski of ARENA Dances activated Kim's work with an immersive performance that invited viewers to slow down and appreciate the natural surroundings while simultaneously delivering a sense of urgency to act and anxiety about what might happen next.



### ***Paper Dialogues: The Dragon and Our Stories***

**February 19, 2022–July 10, 2022**

*Paper Dialogues* explored the similarities between Nordic and Chinese culture and tradition through an art form that traces its roots back more than 1500 years. Danish papercut artist Karin Bit Vejle (Bit) and Chinese artist and Professor Xiaoguang Qiao (Professor Qiao) began their cross-cultural collaboration in 2010. Over more than a decade, the partnership between Bit and Professor Qiao grew to become a world-traveling exhibition that explores the intersections of art, culture, and tradition through impressively intricate papercuts and at times massive in scale.



**ASI Family Gallery: Our Dragon Story**  
**February 19, 2022–December 12, 2022**

ASI's Benson Family Gallery transformed into a vibrant and immersive space for young visitors to experience stories created by local artists Magdalena Mora, Seth Eberle and Bart Buch, Trent Stadler, and fifth-grade students at Hope Academy. Illustration and sculpture, large- and small-scale play elements, and areas for quiet play and reading, offer hands-on play and learning opportunities for children and accompanying adults. Magdalena's bespoke illustrations are joined by unique paper art by Bart and Seth, and fabricated elements by Trent Stadler. Each component was created in collaboration with Hope Academy students in workshops. Drawings, models, sculptures, videos, and pictures share the creative process behind the finished Family Gallery and explore how the children fabricated and shared their stories through art and design.



Photo: C&G Partners

***The Morning Dip***  
**July 21, 2022–October 30, 2022**

The coastal village of Torekov, Sweden, is known for both its local pier as well as for a curious ritual performed by nearly every one of its residents. Each day, locals wake for a morning dip in the sea. There are unwritten codes of behavior associated with this daily tradition, including the selection of one's bathrobe. *The Morning Dip* is an ongoing portrait series by Paris-based American-Swedish artist and photographer Peggy Anderson that captures this daily tradition and associated attire. What began as a simple series photographing Swedes wearing bathrobes has evolved into a deeper examination of Peggy's own heritage and relationship to a country where she lived as a child and now spends every summer.



Andrea Rugg Photography

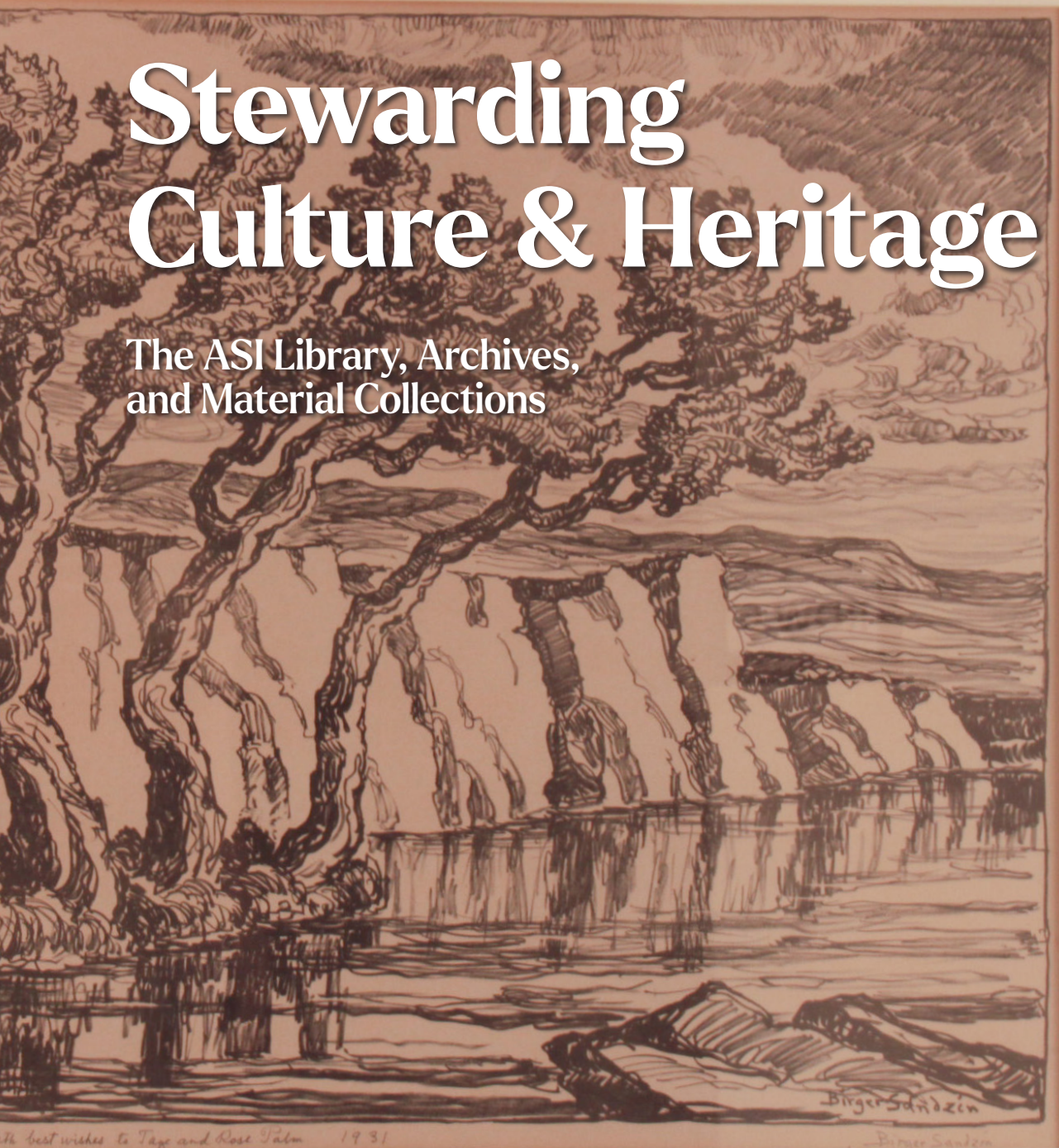
***Birger Sandzén: Distant Horizons***  
**July 21, 2022 – October 30, 2022**

Select works from Swedish-American landscape painter and printmaker Birger Sandzén joined *The Morning Dip*. This display featured prints of the natural world, including works recently acquired into the ASI Collection through the generous donation of the late Dr. James Kaplan. Born in Blidsberg, Sweden, Birger Sandzén (1871-1954) was a prolific painter and printmaker, completing more than 2600 oil paintings, 500 watercolors, and hundreds of lithographs, block prints, and drypoints, during his lifetime. Sandzén studied art in Stockholm alongside Anders Zorn and Richard Berg, and in Paris with Edmond François Aman-Jean, before moving to Lindsborg, Kansas to teach languages, art, and music departments of Bethany College.



# Stewarding Culture & Heritage

The ASI Library, Archives,  
and Material Collections





The American Swedish Institute and its members are entrusted with the care and stewardship of the historic Turnblad Mansion, its campus, and the many historical documents, objects, and artworks that make up the ASI collections. While the ongoing Mansion restoration project works to preserve the historic home, which since 1971 has been on the National Register of Historic Places, ASI staff and members of the Board of Trustees work tirelessly to maintain a robust and diverse collection to bring the stories of Swedish and Swedish American people into the present.

Born in Sweden, Birger Sandzén immigrated to the United States, where he drew inspiration from the vast American landscapes of the Midwest and was a prolific painter and printmaker, completing more than 2600 oil paintings, 500 watercolors, and hundreds of lithographs, block prints, and drypoint etchings during his lifetime. Dr. James Kaplan spent years researching, studying, and collecting Sandzén's work, eventually publishing the book *Birger Sandzén on Art, Music and Transcendence*. Through his passion and dedication, Dr. Kaplan built an impressive collection of prints and personal effects, including an extensive collection of research material, all of which he donated to ASI in the summer of 2022.

To welcome these new items into ASI's collection, Inga Theissen, Manager of Collections and Historical Properties, Shawn Connors, Exhibition Designer, and Bruce Karstadt, President and CEO, traveled to Dr. Kaplan's home in Fargo, North Dakota. They carefully transported the pieces back to Minneapolis where they were officially added to ASI's collection. Several of the pieces donated were featured in the exhibit *Birger Sandzén: Distant Horizons*, which ran from July through October 2022 and offered ASI visitors images of rolling landscapes, dense colors, and rich texture, and were the perfect pair to Peggy Anderson's modern photography in *The Morning Dip*.

ASI is among an international group of museums fortunate enough to have Sandzén pieces in their collections, a group which includes the



## Donation from Dr. James Kaplan

In FY22, ASI was honored to receive a generous donation from the late Dr. James (Jim) Kaplan (1943-2023) which included 29 prints, 3 sketchbooks, and two books written by the Swedish American artist Birger Sandzén (1897-1954).

Minneapolis Institute of Art, the Brooklyn Museum, the Library of Congress, the Art Institute of Chicago, the Philadelphia Museum of Art, and the National Museum in Stockholm. ASI is grateful to Dr. Kaplan for his donation to ASI and his work to continue sharing the legacy of Nordic arts and culture.

## Current Collections Statistics

- 13,525 items in the library collection
- 7,590 pieces in the material collection
- 5000+ users on the collection website
- 258 archival collections
- 43 reference inquiries
- 30 research visits
- 36 acquisitions in FY 2022  
(4 library, 12 archives, 20 material)





# Growing Community

*Our Dragon Story at Hope Academy*

## Fostering a positive impact across the Twin Cities

Following a year of disruption and harrowing challenges brought on by the COVID-19 pandemic, ASI was eager to resume its partnerships and programming with Minneapolis Public Schools. For over a decade, ASI has maintained a presence in several elementary school classrooms, offering unique programming that supports arts curriculum for young school children and engages with one of ASI's core values: learning. In the 2022 fiscal year, ASI resumed normal activities, expanded its offerings to more classrooms than ever before, and adapted to zoning changes to continue serving teachers and educators in the Phillips West and surrounding communities.

Since 2007, second graders at Bancroft Elementary School have worked with ASI staff and volunteers each school year to learn handcraft, visit the ASI campus, and partake in the Pippi Project. Throughout the annual partnership, ASI engages with students through the power of storytelling, starting with an introduction to one of Sweden's most iconic fictional characters, Pippi Longstocking.

The second graders participate in learning about character development and then create their own characters and booklets, each with a unique story and colorful illustrations. The project uplifts and encourages the creativity and experiences of these students, highlights the importance of storytelling, and celebrates individuality.

In the fall of 2021, ASI's longstanding partnership with Bancroft Elementary School experienced a significant shift and ASI doubled the number of partner classrooms served. For the 2021-2022 school year, ASI staff served both second grade students, who carried on with the Pippi Project curriculum, as well as began working with first-grade classrooms. The first graders were introduced to a new storytelling project called "Comic Creators", which took inspiration from the mythology of Scandinavian trolls. Students were guided through activities that explored the many ways to create and tell a story and learned about storytelling elements like plot, setting, problem, and solution to create their own four-panel comic strips. For both classrooms and



projects, ASI welcomed local author, Stephanie Watson, to be the artist in residence.

While ASI's presence at Bancroft Elementary School expanded, another partner school experienced changes of a different kind. Prior to the 2021-2022 school year, Minneapolis Public Schools underwent extensive rezoning, and one of ASI's partner schools transitioned from an elementary school to a middle school. To continue working with third-grade students, ASI partnered with teachers at Green Central Elementary School to bring the Pippi Project to new classrooms. Despite the challenges brought about by the district-wide rezoning, ASI maintained its presence in two Minneapolis Public Schools and increased its offering to new grade levels, serving more students than ever before.

At the same time ASI expanded its partnership at Bancroft Elementary and introduced the students of Green Central to the Pippi Project, a brand-new project at Hope Academy took shape. In the fall of 2021, ASI collaborated with Hope Academy Lower School Art teacher, Catherine Tong, to engage fifth graders in the new design of the Benson Family Gallery. The project took place before the opening of the *Paper Dialogues* exhibit, which was presented at ASI from January–July 2022. For this experience, ASI staff partnered with local illustrator, Magdalena Mora, artists, educators, and puppetry experts Bart Buch and Seth Eberle, and Trent Stadler a local

fabricator and educator to bring the student's ideas and creations to life.

During the creation period, Catherine's students learned about exhibition design and storytelling, which culminated in the production and installation of *Our Dragon Story*, a colorful, whimsical, and immersive family gallery, that opened in February 2022.

Yet another significant change came as ASI transitioned back to in-person after school programming at Whittier Elementary School. Following a year of fully virtual offerings, ASI staff and volunteers visited Whittier once a week from October 2021– May 2022 to engage with students in an after-school program, sharing Nordic handcraft. The projects ranged from wire crafts and decorating Dala horses, to making paper beads, spool knitting, and creating needle felt projects.

Throughout the fiscal year, ASI served nearly 1,000 students through school partnerships, working with students and teachers across four schools through learning, storytelling, and handcrafting, and continued to offer interactive, innovative, and artistic programming to the Phillips West neighborhood and surrounding communities.



**Students from Hope Academy, with the help of ASI staff, create art as part of the new *Our Dragon Story* exhibition in ASI's Benson Family Gallery.**





Banyan Community leading  
a Lighthouse Network  
community event

# Community Fund

The American Swedish Institute's Community Fund is a collective impact fund designed to strengthen service-oriented organizations and initiatives that benefit ASI's neighbors, primarily in Minneapolis' Phillips West community. The Community Fund was started in 2020, in response to the aftermath of the murder of George Floyd, and was created to be responsive to community needs. Through the Fund, ASI seeks to listen to its neighbors and support them as they build, invigorate, and reimagine a shared community.

Since its inception, ASI and its community have provided \$40,280 of support to 21 neighborhood projects and organizations. During the fiscal year 2022, ASI welcomed eight new organizations to the group of community fund partners and recipients.

## **St. Paul's/San Pablo Lutheran Church**

St. Paul/San Pablo Lutheran Church, is a congregation founded in the Midtown Phillips Neighborhood by Swedish immigrants. In

October 2022, the church celebrated its 135th anniversary with a cross-cultural gathering called "Convergencia/Konvergens", which featured local Swedish artists alongside an indigenous Latin American dance group and musical artists and served a variety of food dishes from Sweden and across Latin America.

## **Bois Forte Urban Office**

The Bois Forte Urban Office provides its Tribal Members who live in the urban areas of Minnesota improved access to programs and services including health care, social services and emergency assistance as needed, while acting as a clearinghouse for information on housing, education, and employment opportunities. The Urban Office is a vital means for the Bois Forte Band Members to maintain cultural ties with their own reservation and Ojibwe people, a vital means for their own identity and well-being.



### **Sisters' Camelot**

Sisters' Camelot is a collectively run nonprofit founded in 1997 that is focused on food justice, waste reduction, sustainable living, community building, and youth education. The organization rescues food that would otherwise be wasted and shares free organic groceries and free organic meals with our community with grocery distributions, weekly community meals, from May through October each year. Volunteers and staff gathered at ASI once a month to package and give out free, high quality, organic groceries.

### **Joyce Preschool**

Joyce Preschool provides children from diverse ethnic, linguistic, and economic backgrounds with developmentally and culturally appropriate preparation for success in school and lifelong learning. Joyce Preschool focuses on school readiness, second language acquisition and cultural appreciation, and parent involvement and support.

### **Phillips West Neighborhood Organization**

The Phillips West Neighborhood Organization (PWNO) is the officially recognized Citizen-Participation Neighborhood Organization with the City of Minneapolis. PWNO aims to engage the diverse voices of all those who live, learn, work, and play in Phillips West in order to advocate for greater individual well-being and community empowerment.

### **Banyan Community**

The Lighthouse Network is a neighborhood block club program that focuses on positive relationship-building and proactive community engagement. Facilitated by Banyan Community, the Lighthouse Network supports the Phillips neighborhood through monthly block leader breakfasts, more than a dozen block parties a year, and community-wide events and initiatives, such as a neighborhood cleanup day.

### **Ebenezer Minneapolis Campus**

Ebenezer serves seniors throughout Minnesota from all different backgrounds, faiths, cultures, and beliefs. The Minneapolis campus serves nearly 600 seniors across a continuum of care in the heart of

the Phillips neighborhood. Their residents and staff reflect the diversity of their neighborhood and come to Ebenezer from around the world.

### **Corcoran Neighborhood Organization**

Corcoran Neighborhood Organization (CNO) was established in 1975 around a grassroots effort by neighborhood residents to establish Corcoran Park on the site of a closed school. CNO continues to unite and equip neighbors to improve and protect the neighborhood.

### **Community Fund Recipients:**

826 MSP  
Alley Communications  
Banyan Community  
Bois Forte Urban Office  
Center of Excellence  
Corcoran Neighborhood Organization  
Ebenezer Minneapolis Campus  
English Learning Center  
In the Heart of the Best Puppet and Mask Theatre  
Joyce Preschool  
Little Earth Residents Association  
Open Arms  
Organic Oneness  
Phillips Community Free Store  
Phillips West Neighborhood Organization  
PICA Head Start  
Semilla Center for Healing and the Arts  
Sisters' Camelot  
Somali American Women Action Center  
St. Paul's/San Pablo Lutheran Church  
Tamales y Bicicletas

**To learn more about ASI's Community Fund visit:**  
**[asimn.org/support/asi-community-fund](https://asimn.org/support/asi-community-fund)**

**"Thanks to the ASI Community Fund, Corcoran Neighborhood Organization was able to support community members with food and life resources."**

**–Executive Director Alicia D. Smith**

# Come Together: FY22 Programs



FIKA and Union Hmong Kitchen Dinner

**"Oh, being at Julmarknad again was a balm for the soul. It felt SO good to be back. It is obvious to me that ASI's reach is expanding to so many new audiences!"**  
–ASI Member and Julmarknad attendee

Throughout the fiscal year, ASI continued to overcome the unique challenges presented by the COVID-19 pandemic. Signature events, festivals, and programs that previously hosted hundreds of visitors at a time were re-shaped with limited capacity and with stricter health and safety guidance. Swedish handcraft and Nordic Table classes continued with teaching artists and ASI staff adapting in-person experiences to fit virtual and hybrid settings. Youth and Family programs opted for outdoor gatherings when possible and language classes continued to draw participants both in person and via Zoom.

As gathering restrictions eased, ASI was eager to present new and reimagined cross-cultural experiences drawing loyal visitors and first-time

attendees to engage with a broad and exciting array of arts and heritage-centered offerings. From exhibitions to public programs, all were invited to gather at ASI and new partners from across the Twin Cities helped shape a diverse array of new events and programs for the community.

Despite the obstacles of an ever-changing public health landscape, ASI engaged nearly 45,000 guests across all programs, both on-site and online. The resumption of events and programs that had been dormant during the previous year was met with excitement from the ASI community and visitors were eager to return to ASI's campus.



## FY22 Program Highlights



### **FIKA and Union Hmong Kitchen Dinner**

In the fall of 2021, ASI hosted a cross-cultural dinner experience inspired by ASI's holiday exhibition, *From Our Home to Yours*. Then ASI Executive Chef, Blake Meier, and the award-winning culinary team at FIKA, along with Chef Yia Vang of Union Hmong Kitchen and the highly anticipated new restaurant Vinai, created a unique multi-course meal, complete with drink pairings and insight on each dish. The event highlighted cultural foods, cooking techniques, and celebrated food's role in bringing humans together.



### **Julmarknad Holiday Market**

Following a year of virtual programming, ASI welcomed in-person visitors to Julmarknad, a cornerstone of ASI's holiday season celebrations. In order to accommodate festival goers, ASI implemented a new timed entry ticketing structure to maintain and control crowd size. Visitors, shoppers, and vendors were delighted to be in-person for this monumental festival, which was hosted in December 2021.



### **Iraqi Swedish Cultural Exchange**

ASI, in partnership with the Iraqi American Reconciliation Project, hosted the Iraqi Swedish Cultural Exchange, a day-long festival in June 2022. The event welcomed visitors from across the Twin Cities to join in the cross-cultural celebration and partake in dancing, enjoy traditional foods, and explore traditional handcraft and music of Sweden and Iraq.



### **Midsommar Celebration**

ASI hosted hundreds of visitors at the annual summer festival in May 2022. Despite ongoing visa and international travel restrictions, ASI was thrilled to bring JAERV, an innovative Swedish folk quintet over from Sweden to perform. The ongoing Mansion Restoration project also impacted the festival's traditional host site, the Mansion yard and the veranda; however, ASI's staff prevailed against the unique circumstances and welcomed visitors to the ASI courtyard and other spaces across the ASI campus.

## FY22 Programs

### Special Events

Lutfisk  
Julmarknad  
Midwinter Folk Music Festival  
First Look – Morning Dip  
Midsommar  
Crayfish Party  
Julbords  
Winter Solstice  
Cocktails at the Castle

### Performances

Lucia Choir Performance  
Julglädje  
Lawn Parties  
Symbio  
Jenny Lind Scholarship Concert  
Journey Home Presented by  
The Singers  
Music Thursdays  
Thermal by ARENA Dances

### Youth & Family Focus

Kids at the Castle  
Preschool Program  
Babies at the Castle  
Svenska Skolan  
Starting with Slöjd  
Pippi Project with Green Central  
and Bancroft (Minneapolis  
Public Schools)  
Comic Creators with Bancroft  
Afterschool Handcraft at Whittier  
(Minneapolis Community  
Education)  
Youth and School Tours  
ASI Birthday Parties  
Easter at the Castle  
Family Day: Paper Dialogues  
“Our Dragon Story” with  
Hope Academy  
Summer Camps  
Mini Transmission

### Other Programs

ASI at Minnesota History Day  
Culture & Conversations  
Community Craft, weekly Makers  
Morning and monthly Makers Night  
Nordic Handcraft  
Nordic Table  
Swedish and Finnish Language  
Classes

A Conversation on NATO Membership  
with Senator Amy Klobuchar and  
H.E. Ambassador Karin Olofsdotter  
Virtual Swedish Museum Series  
Lawen Mohtadi Talk  
Nordic Elements: The Norse  
Saga Room  
Secrets of the Sprakkar Book Talk  
Tastemakers Book Talk  
University Day: Kindertransport  
Kubb League  
Iraqi Swedish Cultural Exchange  
From Our Home to Yours: A Dinner  
with FIKA and Union Hmong Kitchen

### Community Partners & Presenters

91.1 FM, MPR News radio  
Adam Kiesling  
African American Registry  
Alma Lov Museum of Unexpected Art  
Amazing Balloons LLC  
American Association of Museums  
American Craft Council  
American Scandinavian Foundation  
American Swedish Historical Museum,  
Philadelphia  
Andreas Schein  
Angelica Ruckstuhl  
Annie Mack  
AnnMade in Minnesota  
Aqua Nabina  
ARENA Dances  
Art Bjornkjeld  
Artifacts of Joy  
Ascension Art Glass  
ASI Lillalag  
ASI Male Chorus  
ASI Spelmanslag  
Äventyr  
Bancroft Elementary School  
Bart Buch  
Becca Cerra LLC  
Beeper Bébé  
Beth Gendler  
Birch & Body  
Bloom  
Bronwyn Bird  
Carl Larsson-Gården  
Catherine Schoenherr  
Cecilia Schiller & Cranky Heart  
Automata  
Claes Fürstenberg  
Claire Selkurt  
Clay Bay Pottery

Clayhouse Pottery Studio  
Cloudberryes  
Coneflower Creative  
Culture Over Carbon  
Dr. Dag Blanck  
Dan Newton  
Dottir  
Dustin Hoag  
Earthtones  
Eliza Reid  
Emma Härdelin  
Erika Skogg  
Fireweed Community Woodshop  
Folkdress Fantasy  
Frances Kelliher  
Girl Scouts of Minnesota and  
Wisconsin River Valleys  
Hallin.Designs  
HejLöv  
Henrik Williams  
HIAS  
Hilary Lor  
Homesteading Bliss  
Hope Academy  
Ilrid Vikings  
Imokim Pottery  
Ingrid Aune  
Iraqi American Reconciliation Project  
Jaerv  
Jake Fee  
Jake Rudh  
Jamtli Museum  
Janis Aune  
Jeanett & Peter Rousu  
Jen Newburg  
Johnson's Fine American Woodworks  
JON SHOOK & VINNY DOTOLLO  
José Luis  
Joshua Clausen  
Joyce Preschool  
Kevin Henderson  
Kilns of Flanders  
Kim Heidkamp  
Kim Losse/Donna Millard Pottery  
Kings of Cole  
Kyle Ward  
Land of Fudge  
Larry David  
Laurann Gilbertson  
Laurie Jacobi Original Designs  
in Wool  
Lee Dean  
Lesley Darling Fiber  
Lisa Rydin Erickson



Little Fevers  
 Magdalena Mora  
 Mai Vang  
 Manfred Lindenbaum  
 Marcia Almquist - The Little Red Trunk  
 Marya Hart  
 Mathew Janczewski  
 Mayukh Sen  
 McNordiques  
 Meg Erke  
 Melissa Hacker  
 Miko Picnics  
 Millennium Studio  
 Missy Robinson  
 Mud and Bark  
 Nan Onkka Prints  
 Needles and Threads  
 Nicholas Kapanke  
 North House Folk School  
 North Mallow  
 Nyckelharpalag  
 Oak Leaf Leather  
 Ole Olsson's Oldtime Orkestra  
 Open Cupboard Designs  
 Oskar Stenmark  
 Patrick Harison  
 Patty & The Buttons  
 Paul & Marikay Dahlin  
 Paul Dahlin & Friends  
 Paul Linden  
 Peder Hegland Pottery  
 Peggy Larson  
 People Serving People, Center of  
 Excellence Preschool and Learning  
 Center  
 Peter Ruddy  
 PICA Head Start  
 Rachel Clark  
 Raphy Gendler  
 Renee Vaughan  
 Richard R. Green Central Park  
 Elementary School  
 Robert Arondson  
 Rose Arrowsmith DeCoux  
 Ross Sutter  
 Sam Gathje  
 Scott Keever

Scott Nichols  
 Seth Eberle  
 Shane Kramer  
 Silja Levandar  
 Silverwood Park  
 Simply Elegant Glass Art  
 Slip Jig  
 Slovzech  
 Spoon & Stable Synergy Series  
 Steller Handcrafted Goods  
 Stephanie Watson  
 STITCHESbycarin  
 Symbio  
 T & C Latané  
 Tara Sweeney Art  
 TC Nyckelharpalag  
 Tessan Tessan-Maria Lehmuusaari  
 Tessoro  
 The Give Get Sistet  
 The Great Northern Festival  
 The Hmong Museum  
 The Homesteads  
 The Jewish Museum Stockholm  
 The McNordiques  
 The Singers  
 The Wild Goose Chase Cloggers  
 Third Daughter, Restless Daughter  
 Thomas Keller  
 Three Rivers Park Distirct  
 Tjärnblom  
 Top Knot Stitching  
 Transmission Music  
 Traveling Tomten  
 Uri Berliner  
 Vasa Jr. Folk Dancers  
 Whittier International Elementary  
 School  
 Viking Encampment LLC  
 Yana Frank Design  
 Zucker Family Suite & Broadcasting  
 Studio, M Health Fairview Mansonic  
 Children's Hospital

#### **FY2 Program Instructors**

Anna Brones  
 Anna Ruhland  
 Becky Utecht

Bliss Benson  
 Bonnie Buzza  
 Charles Banks  
 Christine Hoffman  
 Elizabeth Belz  
 Emily Vikre  
 Emma Wood  
 Erika Skogg  
 Erin Swenson-Klatt  
 Faith Clover  
 Gigi Stafne  
 Ingrid Sundstrom  
 Jen Newburg  
 Jess Hirsch  
 Jessica Karlsson  
 John Fleck  
 Judy McDowell  
 Kathleen Sheridan  
 Kayla McDaniels  
 Kerstin Neumüller  
 Kim Gordon  
 Kirsten Aune  
 Kitty Latané  
 Kristi Bissell  
 Laura Berlage  
 Laura Ricketts  
 Lesley Darling  
 Liesl Chatman  
 Liz Bucheit  
 Maddy Bartsch  
 Maria Wesserle  
 Melba Granlund  
 Natalie Norman  
 Patrice Johnson  
 Paul Linden  
 Pieper Fleck Bloomquist  
 Rachel Willson Broyles  
 Rose Holdorf  
 Sam Gathje  
 Steen Madsen  
 Sue Flanders  
 Susan Tracy  
 Tara Austin  
 Tara Sweeney  
 Teresa Audet  
 Theresa Hornstein  
 Yuka Petz

---

**"We had a wonderful first time experience. We were so impressed with the vitality and beauty of ASI. Our tour guide was excellent and made a huge positive difference in our experience. We will be coming back. Oh, and we have zero Swedish heritage!"**  
**–ASI Visitor**



# Clubs & Affiliates

---

Local and global, the diverse ASI community includes organizations, clubs, people, and events that promote Scandinavian and Scandinavian-American culture. These groups are woven firmly into the fabric of ASI, and many perform at ASI events, or practice and preserve longstanding cultural traditions.



## **Clubs & Performing Groups**

ASI Cloudberries  
ASI Male Chorus  
ASI Spelmanslag  
F.E.S.T (Friends Encouraging Scandinavian Traditions)  
Gustavus II Adolphus Society  
Kaffestuga Friends  
Lila Spelmanslag  
Minneapolis-Uppsala Friendship Committee  
Scandinavian Friends  
Swedish Hospital Alumni Association  
SVEA Club  
SWEA International, MN  
Swedish Genealogical Society of MN  
Twin Cities Dalaföreningen

Twin Cities Nyckelharpalag  
Twin Cities Swedish Folk Dancers  
Vasa Jr. Folk Dancers  
Vasa Order of America  
Västergötland Society

## **Affiliate Organizations**

Agassiz Swedish Heritage Society  
Bemidji Affiliate of ASI  
Dala Heritage Society of Mora  
Dalesburg Scandinavian Association  
Fox Valley Swedish Society  
Punschklubben  
Swedish Cultural Society of Duluth  
Three Crowns American-Swedish Association



# FIKA Café

---

FIKA Café dazzled diners with Nordic-inspired cuisine. The Star Tribune rated FIKA's Swedish meatballs among the most "iconic eats" in the Twin Cities and named the House-Smoked White Fish Smörgås, Semla Bun, and Meatballs in the "5 Best Things Our Critics Ate This Week" column in spring 2022.



FIKA welcomed  
more than  
**38,000** diners  
in FY22





# All Giving

ASI gratefully acknowledges the following foundations, corporations, government agencies, and individuals who contributed to ASI's core mission (annual gifts) as well as donors to the Stories, Stonework, and Stewardship Capital Campaign between October 1, 2021, and September 30, 2022. Please see page 35 for a separate list of donors to ASI's Stories, Stonework, and Stewardship Campaign in its entirety. Three Crowns and Linnaeus membership dues are included in this list. *Tack!*

**\*Denotes a Three Crowns or Linnaeus Level Member**

## **\$100,000+**

Anonymous  
Carlson Family Foundation  
Grain Millers  
Harley and Elizabeth Bergren Fund  
O.C. Hognander Jr., Hognander  
Family Foundation  
Karin Larson Trust  
Lillehei Family Charitable Foundation  
Margaret A. Cargill Philanthropies  
Minnesota State Arts Board

## **\$25,000-\$99,999**

Deloris Anderson  
Sheldon Damberg

Fredrikson & Byron, P.A.  
Institute for Museum and  
Library Services  
Jane N. Mooty Foundation Trust  
Doug and Mary Jones  
Lois Lindgren  
Estate of Barbara M. Meacham  
Minnesota Historical Society  
Leslie Nelson  
Nordlys Foundation  
Prince Carl Gustaf Foundation  
Kathryn and David Sorensen  
Star Tribune  
The Paul D. Pratt and Marguerite  
Olson Pratt Fund

Rich and Cheryl Theilen  
Paul and Ruth Tillquist

## **\$10,000-\$24,999**

Butler Family Community Foundation  
Dorsey and Whitney Trust Company  
Christina Hennington and  
Michelle Hoff  
Laurie Jacobi and Cotty Lowry\*  
Jennifer Novak Foundation  
Johnson Gratitude Fund  
Bruce Karstadt  
Patty Lindell  
Karin Moe  
Ron and Carla Monson





Kubb League in the Courtyard

Claire and Gary Nelson  
Nelson Family Fund  
Beverly and Don Oren  
Douglas and Karen Steelman  
John and Sandra White

#### **\$5,000-\$9,999**

Carl and Maryrose Adamek  
Estate of Evelyn Viktoria Anderson  
Aimee Richcreek Baxter and  
Tom Baxter  
The Brolander Memorial  
Endowment Fund  
Terry Carlson  
Barbara Linell Glaser and Paul Zachos  
Burton and Nancy Johnson  
Peggy Korsmo-Kennon and  
Michael Kennon  
Lisa and Marco Molinari  
Richard and Mary Woods  
Yardbird

#### **\$2,500-\$4,999**

Margaret Adamek and Karl Lorenz  
The Cake Fund  
Steven and Catherine Carlson  
Linda Hoeschler  
Herbert Johnson  
Karolyn and Dale Kingsbury  
Christine and Charles Lane  
Levonne Larson  
John Litell and Britt Erickson  
Byron and Janet Nordstrom  
Andreas and Katarina Ornberg  
Gerald Sjogren

Myrna and Charles Smith  
Barbara Swadburg and James Kurle  
Swedish Council of America

#### **\$1,000-\$2,499**

Susan Adamek  
Susan and Louis Ainsworth  
Rev Rodney L. Anderson and  
Julane M. Anderson  
Karl Benson and Marie Dwyer  
Mark and Debbie Bergman\*  
George and Denise Bergquist  
Margareta Beyer  
Patti Carlson  
David and Karen Carlson  
David and Mary Choate\*  
Nina Clark and Mike Lansing  
Mary Dahlberg and Thomas Johnson  
John Decker  
Bruce Foster  
Fulk Family Charitable Trust  
Helen Grant  
Susan Haggberg-Miller and Bob Miller  
Bonnie Hanson  
Härjedalen Club  
Donald and JoAnne Heltner  
Steven Hunegs and Jenifer Robins  
Kent and Birgit Johnson  
Frank and Peggy Johnson  
Kathryn Johnson  
Andrew and Virginia Kass\*  
Lori Klimp  
Sally and Anders Knutzen  
Chuck and Jill Koosmann  
Suzanne and Miles Lahr

Ben and Ruth Leadholm  
Lorraine Leaf  
Rianne Leaf  
Anne S. Levig  
Evodia Linner  
Christine and Joseph Lupo\*  
Robert and Suzanne Meyerson  
Randal and Lori Monson  
John and Barbara Nelleremoe  
Michel and Barbara Nelson  
Sandra Nelson and Larry Lamb  
Marilyn and Glen Nelson  
Family Foundation  
Elizabeth Olson and Eric Jensen  
Lisa Paulson  
Larry Peterson and Lois Steer  
David and Lois Peterson  
Sue Ann Pirsch\*  
Rodger and Kathryn Ringham  
RPB Family Foundation  
Barbara Rudquist and Barry Schreiber  
Ewa and Anders Rydåker  
John Schulz and Miriam Rykken  
Denise Simonett  
Aaron and Merrie Sjogren  
Christy and Dave Stolpestad  
Gayle Sullivan  
Svithiod Lodge  
Alfred E. and Margaret I. Syring Fund  
Robert and Dorothy Tengdin\*  
Charles Upcraft  
Verdandi Lodge No. 3 I.O.S.

**\$500-\$999**

Jasper Adamek-Bowers  
 Brook and Kathryn Adolfson\*  
 Johan and Jean Åkesson  
 Linnea and Jon Asp\*  
 Barbara Bachman\*  
 Scott Beekman  
 Michael Bjornberg and  
   Ann Haugejorde  
 Carol Brandenburg  
 Richard and Mari Carlson  
 Jean Treber and John Cori\*  
 Karen Durant\*  
 Sharon and Gary Ellis  
 Steven Fitch and Sandra Keal  
 Barbara and Christopher Glasoe\*  
 Leif Hagen\*  
 Dan Hedlund and Robin Preble\*  
 Alice and Dave Holm  
 Peter Huber and Deborah Van Dyke\*  
 Lavone Johnson  
 Sheryl and David Johnson  
 Darold and Carol Johnson\*  
 Martha Johnson\*  
 Eugene and Barbara Johnson  
 Jane Jones  
 James and Martha Justus\*  
 Duane and Susan Kullberg  
 Paul Laederach\*  
 Mary Ann and Paul Laes\*  
 Ruth Lemire\*  
 Sherrie Lindborg  
 Rebecca and Paul Lindell  
 Marissa Lingen and Mark Gritter  
 LaMar Lundell  
 Robert and Hallie Mann\*  
 Kathleen Manning and Mark Dahl  
 William Melton\*  
 Ella Meyerson and Matt Leichter  
 Dawn and Edward Michael\*  
 The Nash Foundation  
 Nancy and Richard Nelson\*  
 Thomas and Susan Nelson\*  
 Alex and Gary Nichols  
 Jeri Norbeck  
 Leonard and Karin Nordstrom  
 Sven and Jodie Nyberg\*  
 Hierald Osorto and Ben Masters\*  
 Redpath and Company  
 Hallie and Steven Richards\*  
 Duane and Pat Rosenberg  
 Scandinavian Friends  
 Lenor Scheffler and Robert Blaeser  
 Elaine Sime

Sarah and Stanley Skinner  
 Sarah and George Sotos  
 Fred and Roxanne Steiner  
 Dorothy and James Stewart  
 Trond Stockenström and  
   Saba Mollalagne  
 Susan Marie Swanson and  
   Thomas Hysell  
 Sandra Titus  
 Västergötland Society  
 Thomas and Margaret Vinson  
 Lisa Weisman  
 Sandra Wessman  
 Laura Westlund\*

**\$250-\$499**

Carl J. Ahlgren Family Foundation  
 John and Judith Anderson  
 Diane Anderson  
 Ruth Anderson  
 Mary Anne Anderson  
 Anonymous  
 ASI Male Chorus  
 Mark and Janis Aune  
 Eleanor Beard  
 Kristin and Jeff Block  
 Erin Bowley and Jeremy Szopinski  
 Joan Brust  
 Jean Canfield  
 Daisy Carlson  
 Erma Comstock  
 Laurie and David Dahl  
 Bill Deef  
 Katie DeGrio Channing and  
   Chris Channing  
 Virginia and John Dell  
 Mary Anne Ebert and Paul Stembler  
 Brad Engdahl and Patricia Layton  
 Richard Erickson  
 Kay Erickson  
 Dean and Donna Erickson  
 Fellow  
 Matthew and Marcia Floding  
 Kimball Foster and David Schreiber  
 C.T. and April Fredrickson  
 Gary and Miriam Gandrud  
 Ingrid and Lars Graff  
 Bonnie Hill and George Dow  
 Nancy Huart  
 Cheryl Jechorek  
 Chris Johnson  
 Yvonne Johnson  
 Margaret and Michael Johnson  
 Carol and Terry Leach

Ron and Diane Leafblad  
 Ann Lee  
 Jane Lindborg  
 Ernest and Jeanne Lindstrom  
 Joan and Robert MacLeod  
 Michele Marrinan  
 Jan McElfish and Tom Ajax  
 Lawrence Peterson  
 Marcia and Owen Peterson  
 Inger and Louis Pignolet  
 Lois Ringquist  
 Susan Ripley and Roger Johnson  
 Thomas and Kristen Ritchie  
 Richard and Judy Sandeen  
 Linnea Sodergren  
 Erik and Syndie Sorensen  
 Robert and Patty Strandquist  
 Rebecca and Jerry Sundquist  
 JoAnn and George Swanson  
 Lynn and Carol Swanson  
 Swedish Hospital Alumni Association  
 Patricia and Alexa Tennyson  
 Carin Thomas  
 Twin Cities Nyckelharpalag  
 Linda Wallenberg  
 Jennifer and Kevin Weist  
 Gregory White  
 Carole Wilson  
 Thomas and Meredith Young

**\$100-\$249**

Wendy Aaserud  
 Steven and Cynthia Ahlgren  
 Steve and Kimberly Alinder  
 Kaj and Gertrud Anderberg  
 Todd and Jenny Anderson  
 Caron Andersen  
 Marcia Anderson  
 Megan Anderson  
 Vincent Anderson  
 Barbara and Van Anderson  
 Cathy Anderson  
 Marilyn Anderson  
 Gordon and Jeanette Anderson  
 Bonnie and Gary Anderson  
 Bradley and Susan Anderson  
 Carole and Darlene Arwidson  
 Annette Atkins  
 Alison Babb  
 Linda and Dennis Baehr  
 Betty Battista  
 Jan Bauer  
 Louise Bauman  
 Jennifer Bea





*Birger Sandzén: Distant Horizons*





Dining Room during *From Our House to Yours*

**\$100-\$249 (cont.)**

Don Benson  
 Lynne and Herb Benz  
 Michael Berglund  
 Allison and Nancy Berry  
 Pamela Berven  
 Galen Blomster  
 Kimberly Boisvert  
 Ann and Gary Bormes  
 Bruce Brandsness  
 Gaylon Brandt  
 Lorna Breiter  
 Mats and Mary Brenner  
 Joann Brown  
 Rachel Burns  
 Pauline Caldwell  
 Troy Cardinal  
 Chris and Susie Carlson  
 John Cassady and Deepika Kakani  
 Central States of Omaha  
 Kathie and Frank Cerra  
 Jill and Scott Chamberlain  
 Patricia and Raymond Chappell  
 Cara Chriatianson Riley  
 Connie Cleary  
 Doris and Fred Cogelow

Sharon Corl  
 Cody Craig  
 Thom Dahlgren  
 Paul and Marikay Dahlin  
 Sharen Darling  
 Ann Davis  
 Janna De Lue  
 Maridee Debertin  
 Douglas and Ann Derr  
 Grant Dolezal  
 Naomi and Dirk Durant  
 Glenace Edwall and Joseph Peschek  
 Paul and Laura Ekholm  
 Duane Engstrom  
 Verdis Erickson  
 Kay Erickson  
 Beverly Erickson  
 Carol Erling  
 Patricia Ewer and David Mangen  
 William Fetzer  
 Sue Flanders  
 John and Priscilla Folin  
 Anonymous  
 Nancy Foster  
 Katie Fournier  
 Linda Fredrickson

Gayle and Richard Garrity  
 Dagmar and Jerry Getz  
 Eloise and Ted Glannobile  
 Jane Ann Goltz and Robert Nash  
 Duane Gorder  
 Lorilyn Gottschalk  
 Ellen Grace  
 Eva and Rudi Gutmann  
 Donna Haines  
 Marian and James Haines  
 Candyce and Thomas Hals  
 Michelle Halverson  
 James and Mary Hammill  
 Anne Hanley  
 Calvin and Linda Harfst  
 Susan and Thomas Harrington  
 Craig Hedberg and Dorothy Jung  
 Inga Hedberg  
 Mary Ellen and Margaret Ann Hennen  
 Nancy Heuer  
 Mary Hintz  
 Mary Hipp  
 Alan and Judy Hoffman  
 Thomas Holman and Sidney Molina  
 John and Barb Hughes  
 Karen and Charles Humphrey



Sue Hunter  
 Steve and Robyn Huspek  
 Ann Hutchings  
 Mildred Huttenmaier and  
     Dennis Tietze  
 James and Mary Jetland  
 Muriel Johnson  
 Anna Marie Johnson  
 Shelly Johnson  
 Ron and Sue Johnson  
 June and Robert Johnson  
 Dennis and Carol Johnson  
 Karen Jonaitis  
 Deborah Jorgens  
 Shirley Kallevig  
 Patricia Kane and Joel Rudney  
 Anita and Fred Kattelman  
 Ingrid Christina Keune  
 Iris and Jay Kiedrowski  
 Dee and Ray Kleinow  
 Robin and Steve Kling  
 Carolyn and Cordell Klug  
 Dean Koutsky  
 Ruth Kruse  
 Elizabeth Kruta  
 Nancy Lamonica  
 Lori and Steven Landberg  
 Christa Lee Lane-Larsen  
 Kirsten and Alan Langohr  
 Doug Larson  
 Kendall Larson and Carol McDonnell  
 Karen LaVine  
 Susan Lee  
 Kay and Alan Leibel  
 Gay Lynn Liljemark  
 Kim Lindahl  
 Carol and Kenneth Lindberg  
 Erik Lindberg and Marcia Glick  
 Carl and Annemarie Lindskog  
 Diane Lindstrom  
 Linnea Londborg and Matthew Feig  
 Verniel Lundquist  
 LaRoy and Lila Luther  
 Michael and Barbara Macioch  
 Dennis Magnuson  
 Jorene Magnuson  
 Elizabeth Mahan and Thomas Shaw  
 Allan Mahnke and Kathryn Schenk  
 Joan and Warren Malkerson  
 Gayle Marcy  
 Diane Marsyla  
 Janelle Mattson  
 Sharon McCarthy  
 Tracy McCauley

Constance Meskill  
 Sharon and Robert Moeller  
 David Monson and Mary Hirschboeck  
 Vernice Monson  
 Lynda Morlock  
 David and Jensine Moyer  
 Diane Nelson  
 Mary Jo Nelson and Mike Naas  
 Carl and Sandra Nelson  
 Paul and Terry Nelson  
 Kelly and Michael Nordstrom  
 Steven and Jenni Norlin-Weaver  
 Janet Olfelt  
 Jennifer and Enrique Olivarez  
 Allen Ollila  
 Arvid Olson  
 James Olson  
 Jennifer Olson and Richard Sveum  
 Steven Olson  
 Andrea Oseland  
 Anita Osterhaug  
 James and Jill Ostlund  
 Keith and Carol Ottoson  
 Jason Patalonis  
 Diane and Richard Pearson  
 David and Margaret Peterson  
 Ruth and Reid Peterson  
 Lia Peterson  
 June Peterson  
 Darlene Peterson  
 Ralph Peterson  
 Mary Jo and Ronald Peterson  
 Sarah Peterson and James Maertens  
 Susan Peterson  
 Donna Pitcher  
 Barbara Raddatz  
 Karen and Andy Rieger  
 David Ringnell  
 Patricia Robertson  
 Barbara Rosene  
 Gordon and Maggie Rosine  
 Carolyn Ruff  
 Suellen Rundquist  
 Deb Sabol-Williams and Jim Williams  
 Virginia Sands  
 Harry Schaller  
 Susan Senecah and Van Calhoun  
 Craig and Mariana Shulstad  
 Kara Sime  
 Katherine Simon Frank and  
     Richard Kain  
 Bruce and Cheryl Skalbeck  
 Carol Smith  
 Elizabeth Smith

Shirley Soderholm  
 Christine Solso and Bob Huber  
 Mary Swan  
 Jerry and Janice Swanberg  
 Joanna and John Swanson  
 Eileen Swanson  
 Megan and Bill Swenson  
 Sue Taylor  
 Marcia Taylor  
 Susan Thompson  
 JoAnn Thoreen  
 Lish Thrall  
 Joan and Charles Threet  
 Mariann Tiblin  
 Jon Tremmel and Linda Nord Paul  
 Ed and Patricia Vaurio  
 Marina Vork  
 Sally Wagner  
 Mark and Melinda Wallin  
 Ann Walton  
 Timothy and Sandra Warren  
 Lee Welter  
 Mary Whitehill and David Mahoney  
 Virginia and Roger Wilson  
 Amy Wimmer  
 Jean and Ray Witter  
 Timothy Wunderlich and  
     Danielle Matson  
 Jennifer and Chad Youngberg





# Stories, Stonework & Stewardship Donors

ASI is tremendously grateful to its community of donors, members, and visitors that have generously supported Phase 1 of the Stories, Stonework & Stewardship Campaign. This list includes all donors to the campaign through June 5, 2022.

Carl and Maryrose Adamek  
Dr. Margaret Adamek and  
Karl Lorenz

Susan Adamek  
Susan and Louis Ainsworth  
JJ Akin  
Steve and Kimberly Alinder  
Deloris Anderson  
Gordon and Jeanette Anderson  
Janet and Lawrence Anderson  
Joyce Anderson  
Paul and Mary Anderson  
Warren D. Anderson  
Anonymous  
Mark and Janis Aune  
Aimee Richcreek Baxter and  
Tom Baxter  
Eleanor Beaird  
Sarah Beckman  
Carline Bengtsson  
Karl Benson and Marie Dwyer  
Mark and Debbie Bergman  
Bergren Family Foundation  
Nancy and Allison Berry  
Margareta Beyer  
Michael Bjornberg and  
Ann Haugejorde  
Carol Brandenburg

Bruce Brandsness  
Joann Brown  
Brenda Butler and  
Joel Woodward  
Butler Family Community  
Foundation  
David and Karen Carlson  
Patti Carlson  
Steven and Catherine Carlson  
Terry Carlson  
Carlson Family Foundation  
James and Merideth Chelberg  
Nina Clark and Mike Lansing  
Connie Cleary  
Erma Comstock  
Susan Cortez  
Thom Dahlgren  
Sheldon Damberg  
Janna De Lue  
John Decker  
Ann and Douglas Derr  
Naomi and Dirk Durant  
Sharon Ellis  
Brad Engdahl and  
Patricia Layton  
Duane Engstrom  
Carol Erling  
Estate of Barbara M. Meacham

Estate of Birdeen Elizabeth  
Johnson  
Estate of John H. Tysk  
Estate of Shirley Discher  
Sue Flanders  
Flickorna Fem  
Matthew and Marcia Floding  
Nancy Foster  
Catherine Fuller  
Barbara Linell Glaser and  
Paul Zachos  
Grain Millers  
Helen Grant  
Mark Gritter and Marissa Lingen  
Melissa and Lars Hansen  
Bonnie Hanson  
Härjedalen Club  
Harley and Elizabeth  
Bergren Fund  
Mary Dee and George Hicks  
O.C. Hognander Jr.  
Robyn Hollingshead  
Thomas Holman and  
Sidney Molina  
Nancy Huart  
Sue and Tom Hunter  
Ann Hutchings  
Kirsten Ingerson



Laurie Jacobi and Cotty Lowry  
 Jane N. Mooty Foundation Trust  
 Jennifer Novak Foundation  
 Burton and Nancy Johnson  
 Catherine and Todd Johnson  
 Frank and Peggy Johnson  
 Herbert Johnson  
 Thomas Johnson and  
   Mary Dahlberg  
 Johnson Gratitude Fund  
 Doug and Mary Jones  
 Jane Jones  
 James and Martha Justus  
 Bruce Karstadt  
 Robin and Steve Kling  
 Peggy Korsmo-Kennon and  
   Michael Kennon  
 Edmund Kopietz  
 Janet Koski  
 Paul Laederach  
 Christine and Charles Lane  
 Karin Larson  
 Carol Leach  
 Rianne Leaf  
 Anne Siren Levig  
 Lillehei Family Charitable Foundation  
 Kim and James Lindahl  
 Glen and Betty Lindberg  
 Lois Lindgren  
 Diane Lindstrom  
 Ernest and Jeanne Lindstrom  
 Evodia Linner  
 Pete Linnert  
 Dr. John Litell and  
   Dr. Britt Erickson  
 Jorene Magnuson  
 Margaret A. Cargill  
   Philanthropies  
 Michele Marrinan  
 Diane Marsyla  
 Tracy and Nathan McCauley  
 Minnesota Historical Society  
 Karin Moe  
 Sandra Mohar  
 Marco and Lisa Molinari  
 Ron and Carla Monson  
 Vernice Monson  
 Lynda and Fritz Morlock  
 Jensine and David Moyer  
 Carl and Sandra Nelson  
 Claire and Gary Nelson  
 Connie Nelson  
 Diane Nelson  
 Doris Nelson

Michel and Barbara Nelson  
 Leslie Nelson  
 Nancy and Richard Nelson  
 Gary and Alex Nichols  
 Nordlys Foundation  
 Pamela and William Nordmark  
 Byron and Janet Nordstrom  
 Randi Nordstrom  
 Allen Ollila  
 Elizabeth Olson and Eric Jensen  
 Ron Olson  
 Andreas and Katarina Ornberg  
 Andrea Oseland  
 Barbro Osher Pro Suecia Foundation  
 Jason Patalonis  
 David and Lois Peterson  
 Delora Peterson  
 Larry Peterson and Lois Steer  
 Ronald and Mary Jo Peterson  
 Sarah Peterson and  
   James Maertens  
 Fay Peterson Kotilinek  
 Sylvia Poling  
 Prince Carl Gustaf Foundation  
 Paulanita Ratwik  
 Lenor Scheffler and  
   Robert Blaeser  
 Shirley Soderholm  
 David and Kathryn Sorensen  
 Angeline Sorenson  
 Gerri Stalberger  
 Karen and Douglas Steelman  
 Fred and Roxanne Steiner  
 Carol Stoddart  
 Christiana and Dave Stolpestad  
 Barbara Swadburg and  
   James Kurlé  
 JoAnn and George Swanson  
 Swedish Genealogical Society  
   of Minnesota  
 The Brolander Memorial  
   Endowment Fund  
 The Cake Fund  
 The Paul D. Pratt and Marguerite  
   Olson Pratt Fund  
 Rich and Cheryl Theilen  
 Susan Thompson  
 Mariann Tiblin  
 Paul and Ruth Tillquist  
 Västergötland Society  
 Sally Wagner  
 Janet Walkup  
 Linda Wallenberg  
 William and Julia Weiler

Lisa Weisman  
 Lee Welter  
 John and Sandra White  
 Marlys Wurdelman

*(List sorted by last name,  
 alphabetically)*

# Life Members

Life Members have made a membership commitment for life and given a gift that symbolizes their gratitude for the American Swedish Institute.

Life Members support ASI's exhibitions, programming, neighborhood outreach, and care of the Turnblad Mansion and collections.

## Below are the new ASI Life Members in FY22

Mary Anne Anderson  
 Adelie Bergström  
 Deborah Camasta and  
   David Bradee  
 Robert and Julie Guelich  
 James and Theresa Holm  
 Karolyn and Dale Kingsbury  
 Patricia Martinson  
 Nicholas and Sarah Panyk  
 Julie and Stu Smith



# Heritage Society

---

Heritage Society members have made a commitment to the American Swedish Institute's future, ensuring the organization remains a gathering place for years to come. Gifts include naming the ASI as a beneficiary in estate plans and/or a gift of \$3,000 or more to the Heritage Endowment Fund.

Lee and Penny Anderson  
Penny and Greg Anderson  
Rev Rodney L. Anderson and  
Julane M. Anderson  
Carole and Darlene Arwidson  
DeAnn Barlow and Kurt Martinson  
Louise Bauman  
MaryAnn Bawden  
Scott Beekman  
Kjell and Donna Bergh  
Bonnie Bergman  
Helen and Gary Bergren  
Jackie Bjoin  
Carl Boberg  
Daisy Carlson  
Joanne Carlson  
Phyllis Carlson  
Barbara Cartford  
Sheldon Damberg  
Michael DeBough  
Erling and Marilyn Eibs  
Duane Engstrom  
Vianne Engwall  
Kim M. Erickson and Bernard Mullen  
Leanne Erickson  
Roselyn Erickson  
Carol Erling  
Philip Friedlund and Lisa Isenberg  
Tanya Gajewski  
Barbara Linell Glaser and Paul Zachos  
Lois Hall and Phil Morton  
John Hasselberg  
Priscilla Hawkinson  
Helena Hernmarck  
Ann and Bob Hildreth

Laurie Jacobi and Cotty Lowry  
David Johnson  
Dennis and Carol Johnson  
Dennis and Kathryn Johnson  
Herbert Johnson  
John Johnson  
Muriel Johnson  
Nancy J. Johnson  
Bruce Karstadt  
Ray and Dee Kleinow  
Diane Larson  
Levonne Larson  
Anne Siren Levig  
Evodia Linner  
Jorene Magnuson  
Norma Magnuson  
Dawn and Edward Michael  
John Morrison  
Leslie Nelson  
Rodney Nelson  
Mary Noble  
Janet Olson  
Marian Olson  
Lisa Paulson  
Diane and Richard Pearson  
Elise Peters  
Jean Peterson  
Larry Peterson and Lois Steer  
Judy Reinking  
Evan Reiter  
Margareta Ritt  
Barbara Rudquist and Barry Schreiber  
Jayne Rudquist Quinlan and  
Dan Quinlan  
Dale Schwie

Maribeth Selvig  
Myrna and Charles Smith  
Bengt Sohlén  
Keith and Karen Solimar  
Carol Stoddart  
Eileen Swanson  
JoAnn and George Swanson  
Virginia and Bob Taylor  
Mariann Tiblin  
Wayne Tubbs  
Lisa Weisman  
Gregory White  
John and Sandra White  
Margaret Wiita  
Jerry Williams



# Volunteer Recognition

---

The American Swedish Institute is indebted to  
its volunteers for their many hours of service.

**198** Volunteers  
**6,741** Hours Given

## **Volunteers giving 100 hours or more**

Arlene Restad  
Beth Kaluza  
Bill Weiler  
Candy LaBarre  
Chick Lane  
Cheryl Olson  
Chris Lane  
Diane Nelson  
Elisabeth Skoglund  
Erma Comstock  
Gordy Rosine  
Helen Bergren

Ted Johnson  
Jeanne Sielaff  
John White  
Judi Blomberg  
Kaaren Jacobson  
Keith Ottoson  
Maridee Debertin  
Melissa Hansen  
Patti Carlson  
Peggy Farmer  
Sandra Wessman  
Ted Johnson  
Wilbur Hill

---

**It is a privilege to be a volunteer at ASI where there are numerous opportunities to utilize individual talents and knowledge in a multicultural, multigenerational, supportive and happy setting. We link the past, present and future in a beautiful castle as we share immigration histories and world class exhibits with local, national and international visitors. There couldn't be a better place to volunteer." –Erma Comstock**





The year in numbers.

**30,799**

Turnblad Mansion and Museum Admissions

**4,569**

Active Member Households

**38,363**

Diners at FIKA

**20,042**

Retail Transactions

**37,415**

Adult Programs Participants

**6,741**

Volunteer Hours Donated

**4,525**

Youth & Family Program Participants

**1,123**

School Partnership Program Participants

**11**

Kakelugn Stoves

**6**

Total Exhibitions

**1**

Visby Window



# Sources of Funds and Expenditures for Core Mission Support and Capital Projects

## Revenue

Donations and Grants	\$1,061,428
Capital Project Donations	\$5,552,925
Government Revenue - Employee Retention Credit	\$746,849
Memberships	\$317,629
Admissions	\$190,081
Programs, Classes and Events	\$422,719
Cultural Enterprises, Net Cost of Sales	\$1,218,245
Operating Investment Revenue	(\$121,416)
Tenant Club Rental	\$79,477
Net Assets Released for Operations*	\$481,143

**Total Revenue** **\$9,949,080**

This financial information accurately represents operations and capital campaign gifts, but is not presented in accordance with generally accepted accounting principals.

For audited financial statements when available, see [asimn.org](http://asimn.org).

\*Prior donor contributions considered as income due to satisfaction of donor directed expenditures.

## Expenditures

### Operations

Museum, Programs, and Core Mission Support	\$5,242,203
--	-------------

### Net Assets

Change in Net Assets	\$4,706,877
----------------------	-------------

### Other

Donations for Capitalized Projects	\$285,000
Contributions of Charitable Trust Held by Others	\$13,459,315
Capital Expenditures from Operating Funds	\$2,944,543







2600 Park Avenue  
Minneapolis MN 55407  
(612) 871-4907 | [asimn.org](http://asimn.org)



Connect



© 2023 American Swedish Institute